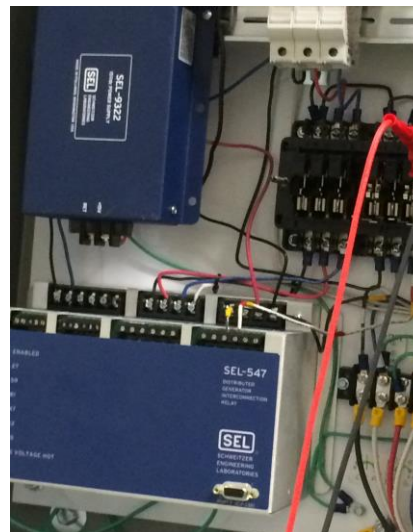
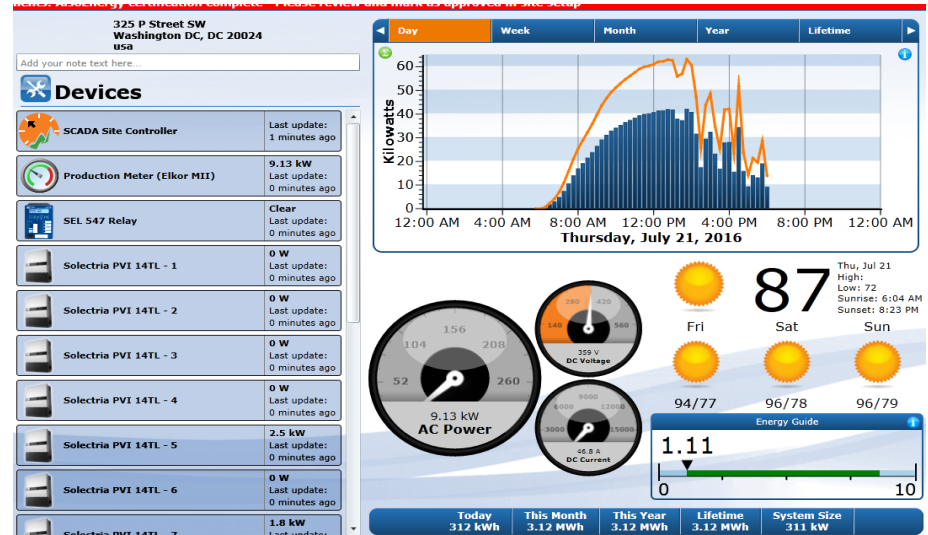
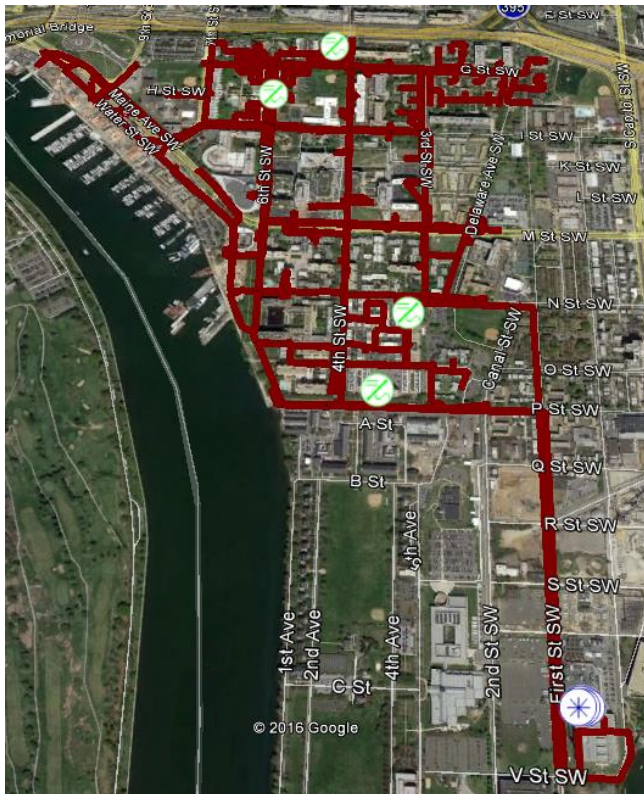


Larger PV Projects in the Secondary Network

- Desired PV System Size: 280kW
- On a Low Voltage AC Network
- Minimum Daytime Load of 150kW
- Must export less than 120kW to insure no problem with network system

Used Advanced Inverters and a relay package to allow PV system to be sized greater than allowable export limit



Internet based system allows utility to check output and receive email alarms if export limit is exceeded

CREF – Community Renewable Energy Facility

- Implementation is relatively new
- The total CREF solar output must be separate from the load at the site (not NEM)
- The output is applied to the target list of customers
- PHI is working through a safe cost effective way to connect CREF systems that meets the rules



Hosting Capacity and Restricted Circuits

- Currently have Restricted Circuit Maps
- Developing Hosting Capacity Maps that will inform customers or developers how much more PV or other Distributed Energy Resources can be accommodated on circuits

